



Welcome to MobileDesk™ and Laptop Screen Disabler™

Eliminates Distracted Driving Associated With In-Vehicle Laptop Computers

**LAPTOP
SCREEN
DISABLER™**

Blanks the Computer Screen When Sensing Vehicle Movement

- Enforces Safe Driving
- Latest Technology
- Easy to Install
- No Special Connections

The Laptop Screen Disabler™ is a mobile workforce safety solution that eliminates driver distractions associated with the use of mobile computers in a vehicle. The device accomplishes this by blanking the screen of the laptop as it senses motion while the vehicle is moving. The Screen Disabler will then return the screen to active status when the vehicle is not moving. This ensures the driver will not be distracted by looking at the screen or trying to work on the laptop while driving.

The screen disabling function does not interfere with the capability of the computer to perform its communication and computation activities; it merely eliminates the distraction associated with an active screen while driving, and the temptation to operate or look at the computer while the vehicle is moving. The results are fewer auto accidents, increased mobile worker productivity and overall safer work environments for your mobile workers and anyone driving on the road with them.

Contents

1. System Administrator Instructions Page

(User with administrator rights to the local machine)

System Requirements	3
Laptop Screen Disabler™ Program Installation	3
Stopping Laptop Screen Disabler™	4
Viewing the Log – System Administrator	5
Adjusting the sensitivity of Laptop Screen Disabler™	6-7
Uninstalling Laptop Screen Disabler™	8
Reinstalling or Upgrading Laptop Screen Disabler™	8

2. Computer Operator Instructions

(End user with limited rights)

Hardware Installation	9
Vehicle Installation	9
Installation	10
Operating Your Computer with Laptop Screen Disabler™	11
Technical Support	11

1. System Administrator Instructions

Installation of the MobileDesk™ Laptop Screen Disabler™ requires the following steps:

a. System Requirements

- Pentium 4 or higher
- Windows XP, Vista, or Windows 7
- One available USB type 1 or 2 Interface
- One Administrator & at least one limited user account
- Microsoft Server Management package for remote installation and upgrades. (End User Supplied)

b. Laptop Screen Disabler Installation

- Log into the mobile computer as the local machines' System Administrator
- If the primary user does not have a limited account, create any type of limited user that is still functional with end users applications. This account must not have System Administrator privileges. (Otherwise, users would then have capability to disable the Laptop Screen Disabler™)
- Log in to the new account one time to activate the profile and then reboot the computer.
- Upon completion of the reboot, please log on as an **Administrator on the local machine** (Not a network administrator).
- **Install Step 1:** With the MobileDesk™ installation disc in the CD drive please install the “2008” Microsoft Visual C Redistributable Package”, this file is located in the folder called “Microsoft Visual C++ 2008 Redistributable” and is named “vcredistx86.exe”. Double click the file and choose “Run” from the menu and follow the prompts as directed (**Fig 1**).

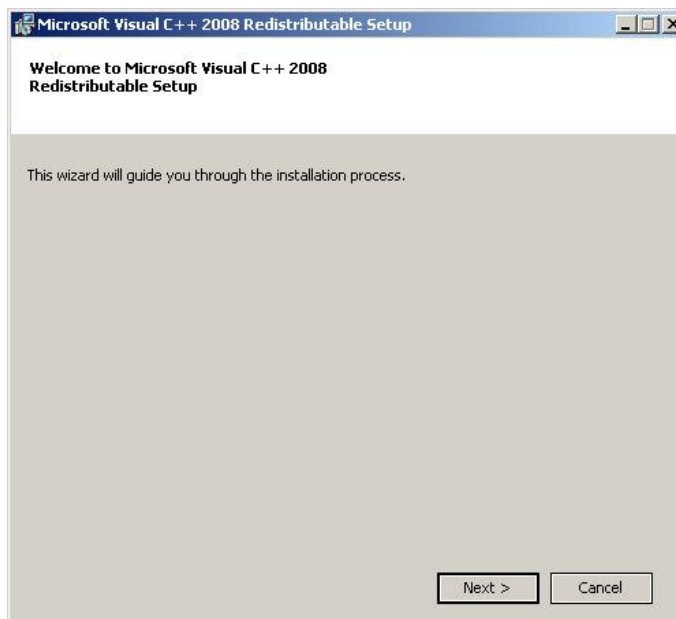


Fig 1

- **Install Step 2** ***You Must Have a LSD Dongle to proceed past this step *** Insert the MobileDesk™ installation disc in the CD drive and install the application by selecting setup.exe for that drive. Follow the prompts as directed (**Fig 2**).



(Fig 2)

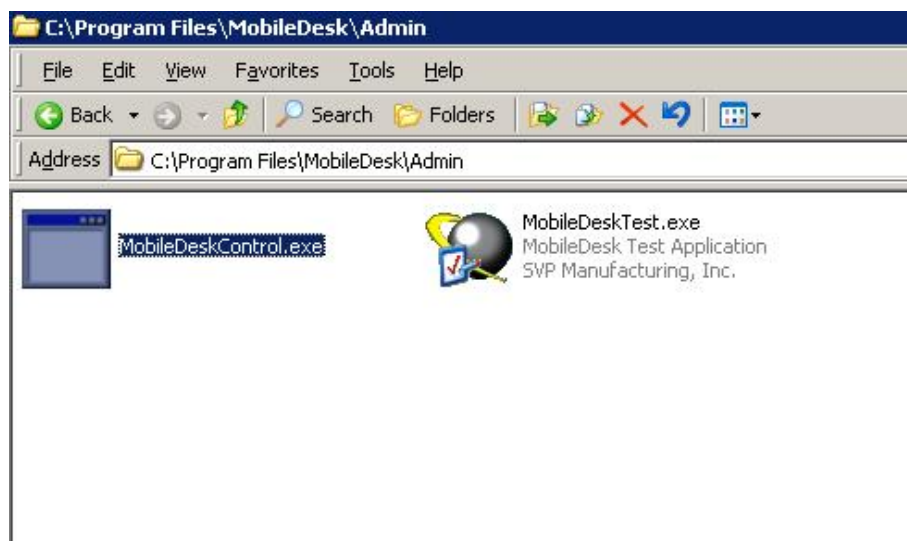
- **Reboot the computer and log in as any limited local or domain user.**

c. Stopping the Laptop Screen Disabler

Log into the System Administrator's account

Open the Administrator's directory under the MobileDesk™ installation directory (C:\Program Files\MobileDesk™ \admin)

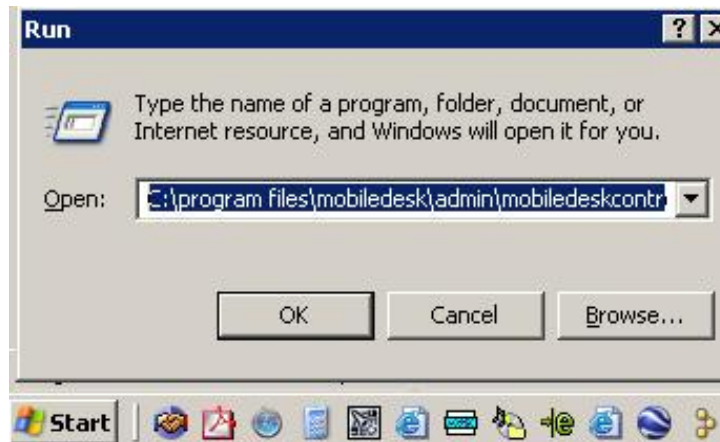
Run MobileDesk™ Control.exe (double click) (**Fig 3**)



(Fig 3)

Alternate method

- Click Start->Run and type C:\program files\MobileDesk\admin\control.exe (Fig 4)

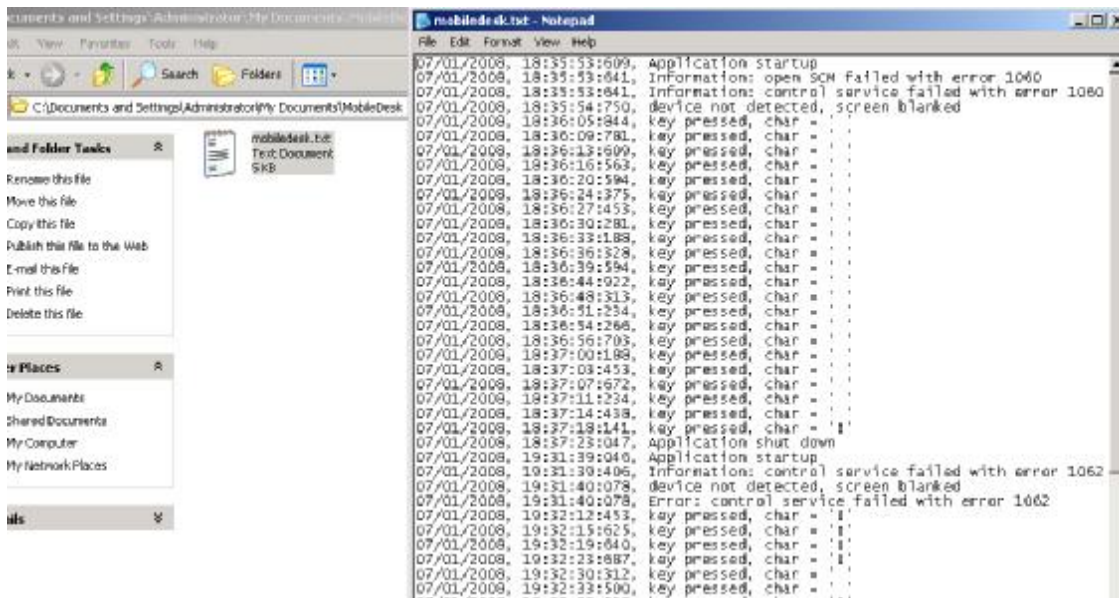


(Fig 4)

d. Viewing the Log – System Administrator (Fig 5)

The Laptop Screen Disabler™ Application maintains a hidden log file of the times that the screen is blanked or the program is stopped. The System Administrator can periodically review this log to determine whether a user is frequently “unblanking” the screen or trying to shut down the program. This may indicate that the user is attempting to use their computer. You will find the log in the C:\ProgramData\MobileDesk folder in Vista or in XP in the C:\DocumentsandSettings\All Users\Application Data\MobileDesk folder. The file name is MobileDesk.txt

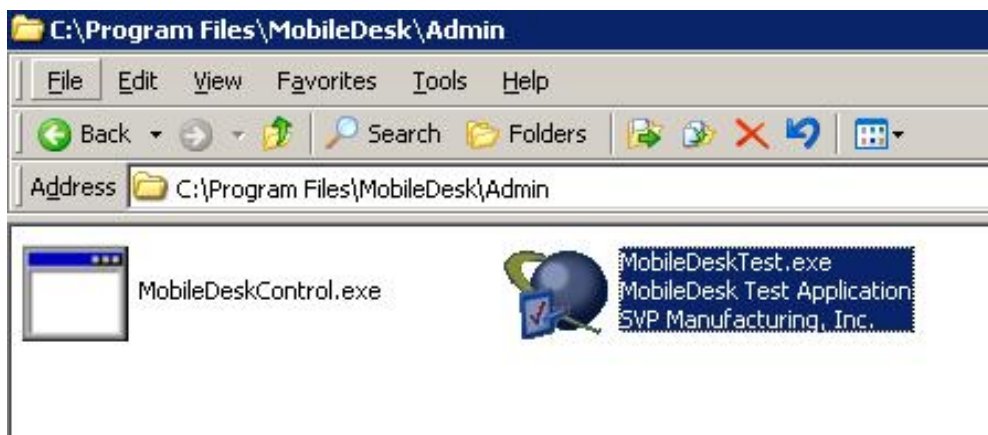
- The log cannot be accessed while the application is running
- The log is in CSV (comma separated values) so that it can be exported into Excel for analysis
- If desired, the log can be renamed once the MobileDesk™ application has been terminated.



(Fig 5)

e. Adjusting the Sensitivity for Laptop Screen Disabler™

- Log into the System Administrator's account
- Stop the program by logging into the System Administrator's account
- Open the Administrator's directory under the MobileDesk™ installation directory (C:\Program Files\MobileDesk\admin)
- Run MobileDesk™ Control.exe (double click), this will stop the program;
- Alternate method to stop Laptop Screen Disabler™. Click Start->Run and type C:\program files\MobileDesk\admin\control.exe
- Open the Administrator's directory under the MobileDesk™ installation directory (C:\Program Files\MobileDesk™ \admin)
- Run MobileDeskTest.exe (double click) (Fig 6)



(Fig 6)

- If the Laptop Screen Disabler™ hardware device is not detected then the hardware graphic is grayed out (**Fig 7**). Once detected the hardware graphic will turn to a green when motion is detected (**Fig 8**) and a red color indicates that it has not detected motion (**Fig 9**).



(Fig 7)

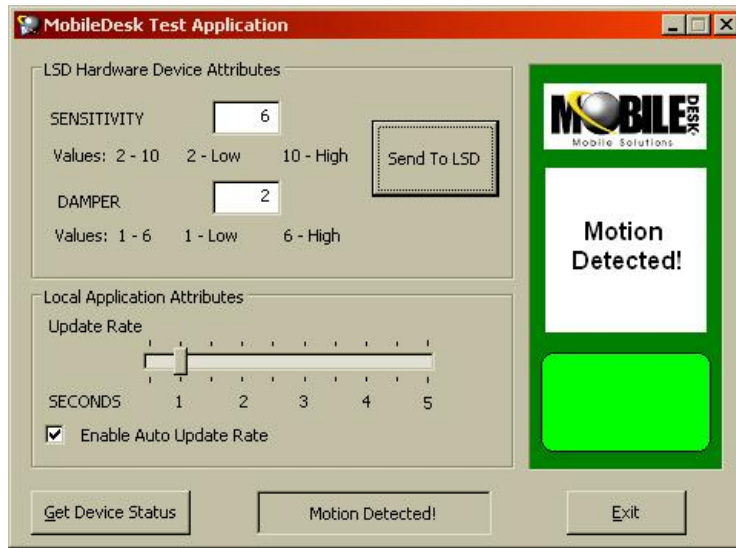


(Fig 8)



(Fig 9)

- The color hardware graphic displays a large green dot when motion is detected and also indicates that it has detected motion
- The large green dot will disappear when motion is no longer detected
- Sensitivity is adjusted by changing the settings on two key device attributes:
 - Sensitivity – Default setting of 6 with adjustability range of 1 to 10
 - Damper – Default setting of 2 with adjustability range of 2 to 6
 - The remaining device and USB attributes are currently fixed and require no adjustments
- Any change to the default setting must be followed by clicking Send to save the data in the USB device. The software will acknowledge that the data has been sent successfully in the device status window (**Fig 10**)
- Sensitivity is defined as the speed by which the Laptop Screen Disabler™ will blank the laptop screen upon initial vehicle acceleration. Under normal conditions, the device will respond between 5 to 15 miles per hour at the default settings.
- To increase the sensitivity, the **Sensitivity** setting should be adjusted upward. Conversely, decreasing the settings will enable better performance for older and heavier vehicles that tend to have higher than average vibration.
- To increase the time to blank and un-blank, the **Damper** setting should be adjusted up or down to preference.
- Each time the System Administrator sends a new setting to the USB Device, the program will go back to the default values. This is by design; so it is important that the previous settings are manually noted



(Fig 10)

f. Uninstalling Laptop Screen Disabler™

The System Administrator can uninstall the Laptop Screen Disabler™ program by the following steps:

- Stop the program by logging into the System Administrator's account
- Open the Administrator's directory under the MobileDesk™ installation directory (C:\Program Files\MobileDesk\admin)
- Run MobileDesk™ Control.exe (double click), this will stop the program;
- Alternate method to stop Laptop Screen Disabler™. Click Start->Run and type C:\program files\MobileDesk\admin\control.exe
- Navigate to the control panel. Click Start->Settings\Control Panel\Uninstall\MobileDesk. (Fig 11)

Uninstall or change a program

To uninstall a program, select it from the list and then click "Uninstall", "Change", or "Repair".

Name	Publisher	Installed On	Size
Microsoft Office Professional Edition 2003	Microsoft Corporation	7/14/2008	580 MB
Microsoft Office Small Business Connectivity Components	Microsoft Corporation	6/24/2007	158 KB
Microsoft SQL Server 2005	Microsoft Corporation	6/24/2007	194 MB
Microsoft SQL Server Native Client	Microsoft Corporation	7/8/2008	2.59 MB
Microsoft SQL Server Setup Support Files (English)	Microsoft Corporation	7/8/2008	24.6 MB
Microsoft SQL Server VSS Writer	Microsoft Corporation	7/8/2008	687 KB
Microsoft Visual C++ 2005 Redistributable	Microsoft Corporation	7/8/2008	421 KB
MobileDesk	MobileDesk	7/14/2008	3.31 MB

(Fig 11)

G. Reinstalling or Upgrading Laptop Screen Disabler™

- Stop the program
- Uninstall the software
- Got to the program files on the c drive and delete the mobiledesk directory
- Reboot the machine
- Put the new disk in the CD drive
- Cancel the auto run
- Install the 2008 Redistributable first
- Now install the MobileDesk installer
- Plug the dongle in
- Reboot
- Stop the program using the mobiledeskcontrol.exe in the admin folder
- Run the mobiledesktest.exe in the mobiledesk admin folder
- Set the settings to 6 and 3
- Click send to LSD
- Click on MobileDesk monitor to restart

Computer Operator Instructions

As a commitment to your driving safety, your company has enabled your laptop computer with the Laptop Screen Disabler™. This device will eliminate distractions from an active screen while your vehicle is moving, but will allow use of the laptop computer when the vehicle is at rest.

a. Hardware Installation

Please contact your System Administrator

b. Vehicle Installation

The Laptop Screen Disabler™ unit is best used with a MobileDesk™ laptop mount.

- Insert the provided long (5ft. length) black extension cable into the laptop computer's USB port, run the cable down the support arm of the vehicle mount so that the receptacle end is at the bottom or base of the arm. Use the cable ties to hold the USB cable securely to the support arm. Any excess cable should be gathered and secured with a cable tie
- Insert the Laptop Screen Disabler™ USB device into the receptacle end of the USB cable, and position the device at the base of the vehicle using the optional bracket.
- It is vitally important that the Laptop Screen Disabler™ device is attached to a solid material and positioned in a standard flat position within the vehicle. For added stability, use the optional mounting bracket to secure the USB device extension cable to the base transmission hump or the floor of the vehicle (If mounting to a vehicle laptop stand then it must only be installed to the base and only if the based is installed solid within the vehicle. Tip: The closer to the floor the better the performance! See illustrations (Fig 12) below



Fig12

Computer Operator Instructions - continued

c. Installation

- When the laptop computer is removed from the vehicle, the Laptop Screen Disabler™ must be inserted into the laptop computer's USB port to keep the display operating
- The most effective way to use the laptop computer outside the vehicle is as follows:
 - Insert the provided short cable into the USB port and insert the Laptop Screen Disabler™ into the receptacle end
 - Ensure that the laptop computer is on a level surface, and secure the Laptop Screen Disabler™ with a Velcro tape dot provided. It is very important to eliminate any casual movement or vibration of the device

d. Operating the Laptop Computer with MobileDesk™ Laptop Screen Disabler™

- With the Laptop Screen Disabler™ inserted in the computer with a cable, the computer will operate as expected. The Laptop Screen Disabler™ can be inserted directly into the USB port; however, vibration from tapping the keyboard may trigger the sensitivity. The best approach, is to use the provided white extension cable
- If the Laptop Screen Disabler™ becomes lost or damaged, the computer screen will remain inactive and will require that a replacement unit be provided by the System Administrator
- When the unit detects motion or vibration, the screen will become inactive. Pressing the space bar returns the computer screen to an active status

e. Technical Support

- Online Support is Available 8am–6pm Monday through Friday EDST
<http://www.laptopscreendisabler.com>
- Email Support is Available 9am-5pm Monday through Friday EDST
support@laptopscreendisabler.com
- Phone support is available from 9am-5pm Monday through Friday EDST
Please call 513-341-5083 for support.

SVP / Mobile Desk

Mobile Desk East 5275 Fieldstone Ct. West Chester, Ohio 45069 Office (513) 759-0904 Fax (513) 759-0914	Mobile Desk West 702 North 21st Avenue Phoenix, Arizona 85009 Office (602) 233-3665 Fax (602) 233-9445
---	---

